



Fräs Larsson and Anna in front of the main building, no. 1.

1. Residential house (Parstuga), dates from the late 1700s. The first floor was added in 1836; at that time the building had its natural colouring, with only the corners painted red. In 1857, Fräs Lars Larsson, the owner, added panelling to the exterior and painted the house light-yellow, which was the colouring of the houses in the area of Lake Mälaren. He also added a porch to the house, which bears the initials LLS and the year 1857. The house is well preserved and gives an authentic picture of what life was like for a well-to-do farmer.

2. Portliderhus(The gate house), above the door there is a cross and the year 1778. Flour and dried meat was kept here. On the first floor there are two rooms, one was a bedroom for the maid and the other was for the mangle.



Coffee in the lilac arbour outside Anna's chamber (no. 4).

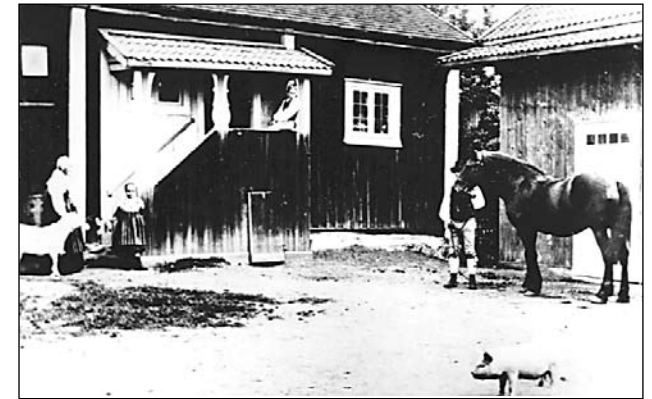
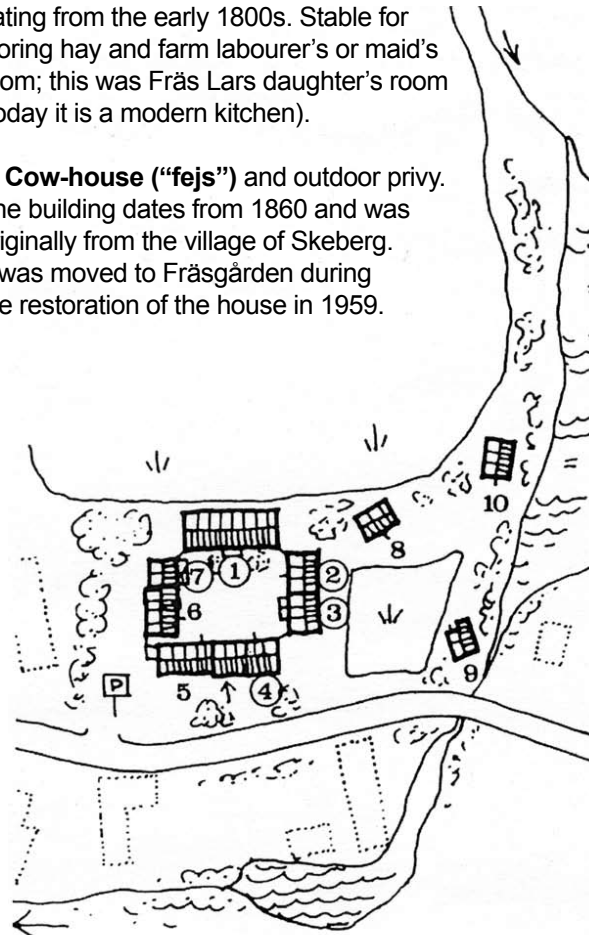
Fräsgården in Ytterboda

The buildings numbers one to four and number seven are in their original locations.

3. Cellar house, "Östra nattstugan" (the eastern night house), dating from the early 1880s. The term Nighthouse refers to unheated bedrooms that were only used during the summertime. Various articles of the local costume (Leksandsdräkten) are displayed in the clothes' cupboard.

4. Portliderhus (the gate house), Anna's chamber, dating from the early 1800s. Stable for storing hay and farm labourer's or maid's room; this was Fräs Lars daughter's room (today it is a modern kitchen).

5. Cow-house ("fejs") and outdoor privy. The building dates from 1860 and was originally from the village of Skeberg. It was moved to Fräsgården during the restoration of the house in 1959.



The yard in front of "Östra nattstugan" (no. 3) and Anna's chamber (no. 4)..

6. Stable and gateway with loft and store, dating from the early 1800s. This building originally comes from Smedby.

7. Västra nattstugan (the western night house), Maid's house or Lasse's house, dating from the early 1800s. Instead of a cellar there was a "kuppbud" in which wooden containers were put to keep moist.

8. Stolphärbre, parhärbre (storehouse), on two floors dating from around 1590 and originating from the village of Almo. The first floor was added during the 1700s. The oldest parts of the building have oval and urn shaped joints. In both rooms there are storage boxes for grain.

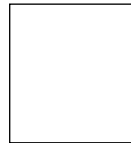
9. Blacksmith's workshop with coal shed. This building comes from Åjer and was moved to Fräsgården. It was placed next to the stream on the foundations of the original smithy.

10. Torkstugan (drying hut), "töstu" was, like the blacksmith's workshop, moved to Fräsgården and placed on an original foundation. In the middle of the floor there is an oven and on its sides benches for the grains.

For information about
opening hours and the programme
of activities please contact:
Leksands Kulturhus, tel: 0247-80245,
www.leksand.se/kultur

For event and tourist information
please contact
Siljan Turism, tel: 0247-797200,
www.siljan.se

FRÄSGÅRDEN IN YTTERBODA



FRÄSGÅRDEN IN YTTERBODA

Fräsgården is a family property dating back to the early 1600s. It had been occupied and farmed by the same family up until 1947. The house, situated in the centre of the village of Ytterboda on the banks of a stream (the Bodaån), is surrounded by fields, meadows and houses.

In the past the estate had its own private power station next to the stream. This produced energy for light and for threshing machines, the carpentry workshop and for the mill.

Behind the house there was a large and well maintained garden, with flowers, fruit trees, bee hives and a kitchen garden.



FRÄSGÅRDEN IN YTTERBODA